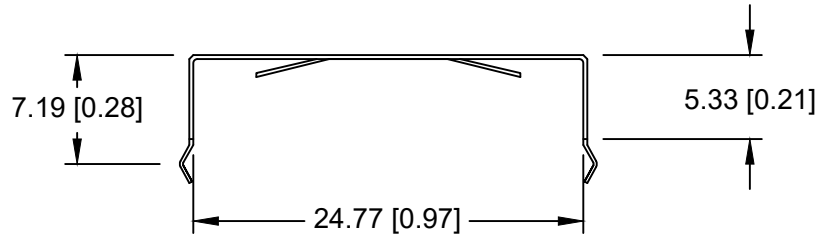
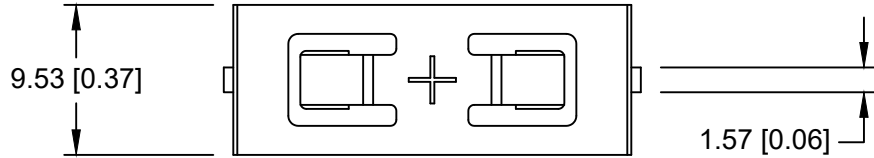
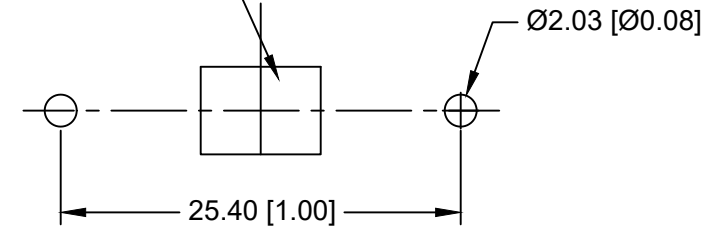


Date	SYM	REVISION RECORD	AUTH	DR.	CK.
09/02/16	C	ADDED WEIGHT OF THE PART	T.B.	B.S.	
12/09/16	D	ADDED TABLE OF BATTERIES	T.B.	B.S.	
04/05/19	E	UPDATED NOTES	T.B.	B.S.	



NEGATIVE CONTACT PAD
NICKEL OR GOLD PLATED
RECOMMENDED




PCB LAYOUT

NOTES:

- * Material- 0.25mm Phosphor Bronze, Nickel plated.
- * Vibration test: 10-50-10 hz swept in 60 seconds
x,y,z direction: 1 hour each direction
- * Result: no dislodgement of the cell or damage
no discontinuity over 10 micro-seconds
- * Shock test: half sine wave acceleration 150g.
6 ms 1 shock pulses each direction per axis
- * Result: no evidence of physical damage
- * Drop Test: Mounted on board and dropped 1 time per direction
from 1m high to wooden floor
- * Result: No dislodgement of the cell, No damage to the holders
- * Approximate weight: 0.65g
- * ROHS COMPLIANT

CELL SIZE	RETAINS BATTERY NUMBERS
24mm	BR2450, CR2450, DL2450, LIR2450

Tolerance (Except as noted)	 Memory Protection Devices, Inc 200 Broad Hollow Road, Farmingdale, New York 11735		
		decimal	Scale
±.5 (.020)			Approved By T.B.
Fractional	Title		
± .8 (.030)	CR2450 BATTERY STRAP, PC		
Angular	Date	Drawing Number	
± 3°	04/05/19	BC-2007	